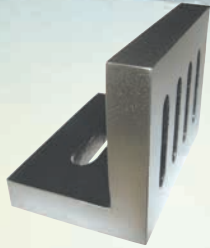


## TOOLING & ACCESSORIES

### ANGLE PLATES - PRECISION GROUND

- Open end
- Flat & square accuracy within 0.025mm per 150mm
- Precision ground finish

Length (mm)	Width (mm)	Height (mm)	CODE	inc GST
112	88	75	M242	\$71.50
150	125	112	M243	\$90.75
200	150	125	M244	\$139.15



### ER COLLET CHUCK SETS

- 6 Collets covering metric & imperial



### TM TOOLMASTER

Collet	Taper	Piece	Range (mm)	CODE	inc GST	NT30
ER32	3MT	6	7-6, 8-7, 10-9, 13-12, 16-15, 20-19	C922B	\$278.30	
ER32	NT30	6	7-6, 8-7, 10-9, 13-12, 16-15, 20-19	C9245	\$278.30	

### ROTARY TABLES

#### TM TOOLMASTER

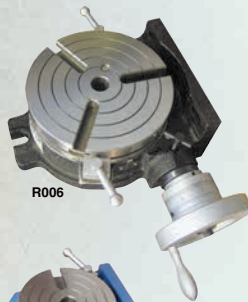
- RT-3
- Gear ratio 36-1
- 4 x T-Slots
- 8mm T-Slots
- Hand wheel can be set to zero
- Hand wheel graduated in 10min divisions
- Table is graduated to 360°
- Can be used both horizontally & vertically



**\$133.10**  
inc gst  
R001

#### HV-4 / HV-6 / HV-8 / HV-10 / HV-12

- High level of accuracy
- Hardened and ground worm gear
- Gear ratio 90:1
- Vernier reading 10 seconds
- Table is graduated to 360°
- so one turn of the handle moves the table 4°
- Smooth operation for precision work
- Can be used horizontally or vertically

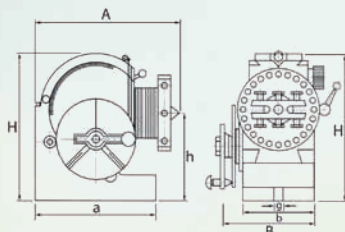


### VERTIX®

Diameter (D)	Height (H)	Weight	CODE	inc GST
110mm	80mm	7.5kg	R005	\$350.90
152mm	80mm	12kg	R006	\$363.00
203mm	105mm	30kg	R008	\$592.90
254mm	115mm	45kg	R010	\$701.80
305mm	135mm	85kg	R012	\$871.20

### DIVIDING HEADS - SEMI-UNIVERSAL

- Improved design with spindle spigot nose for a more accurate chuck mount
- The head can be swivelled from 10° below horizontal to 90° vertical
- Worm hardened and ground ratio between worm and worm wheel 40:1
- Dividing plates are designed to allow easy indexing on numbers 2, 3, 4, 6, 8, 12 & 24



Model	Centre Height	A	B	H	h	a	b	g	Taper	Bore	Weight	CODE	inc GST
BS-0	100mm	189	140	173	100	160	91	13	2MT	18	20kg	D001	\$592.90
BS-1	128mm	293	156	220	128	207	114	16	3MT	20	30kg	D002	\$786.50



### FLANGED NUTS & CLAMP KIT TEE NUTS

#### Flanged Nuts

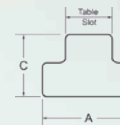
- Sold in sets of 2

Thread	CODE	inc GST
1/2" UNC	N084	\$11.00
M10	N085	\$11.00
M12	N086	\$11.00
M16	N088	\$11.00



#### Clamp Kit Tee Nuts

- Sold in sets of 2



Slot	Thread	A	B	C	CODE	inc GST
5/8"	1/2" UNC	1"	11/32"	5/8"	C084	\$14.30
10mm	M8	16mm	6mm	12mm	C085	\$14.30
12mm	M10	18mm	7mm	14mm	C085A	\$14.30
14mm	M12	22mm	8mm	16mm	C086	\$14.30
16mm	M12	25mm	8mm	16mm	C087	\$14.30
18mm	M16	28mm	11mm	20mm	C088	\$17.05

### KEYWAY BROACH SETS

- HSS broach set consisting of broaches, bushes & packing shims



Type	Broach Width	Bushes Ø	CODE	inc GST
Metric	4, 5, 6, 8mm	12, 14, 15, 16, 18, 19, 20, 22, 24, 25, 26, 28, 30mm	M498	\$544.50
Imperial	1/8", 3/16", 1/4", 3/8"	1-1/2", 1-3/8", 1-1/4", 1-1/8", 1", 7/8", 3/4", 5/8", 1/2"	M500	\$544.50

### COOLANT PUMPS - ALMOST ANY APPLICATION

- Submersible type
- High-tensile cast iron housing
- Totally enclosed motor and non-corrosive plastic impellers

CODE	P232	P233	P230
Discharge at 2M lift	20ltrs/min	20ltrs/min	60ltrs/min
Total Height (L)	285	285	350
Submerge Depth (L1)	130mm	130mm	180mm
PCD 4 mount holes	130	130	160
Outlet	3/8"	3/8"	1/2"
Motor (hp / V)	1/8 / 240	1/8 / 415	1/4 / 415
Weight (kg)	6.5	6.5	13
inc GST	\$143	\$143	\$352



## TOOLING SETS

### Turning Tool Set 10mm

- 4 x Turning & 1 x Boring bar
- 4 x Turning inserts TCMT110204 (Re-Order Inserts: L062)
- 1 x Boring inserts TCMT090204 (Re-Order Inserts: L0615)



**\$107.80**  
inc gst  
L0055

### Turning Tool Set 12mm

- 1 x right hand parting
- 1 x Threading Tool
- 1 x right hand roughing turning tool
- 1 x left hand & right hand 90° turning tool
- 1 x straight profile turning tool
- 1 x right hand profile turning tool
- 1 x Insert per tool (Re-Order Inserts: L0098)



**\$217.80**  
inc gst  
L0099

### Turning Tool Set 16mm

- 1 x right hand roughing turning tool
- 1 x right & left hand 90° turning & facing tool
- 1 x right & left hand profile tool
- 1 x parting & threading tool
- Includes 1 x insert per tool



**\$229.90**  
inc gst  
L0077

### Boring Bar Set - Carbide Insert

- 3 x Boring bars in set (8, 10, 12mm)
- 3 x Inserts • Aluminium case (Re-Order Inserts: L060)



**\$169.40**  
inc gst  
L431

## CARBIDE INSERTS

- 10 piece replacement carbide tipped set
- Suits 10 mm set L055



**\$95.70 inc GST** (L062)

- 10 piece replacement carbide tipped set (2 pieces per style)
- L0098 suits 12mm set L0099
- L0078 suits 16mm set L0077



**\$96.80 inc GST** (L0615)

**\$114.95 inc GST** (L0098)

**\$121 inc GST** (L0078)

## LIVE CENTRE SETS

- Hardened tip
- Precision ground



MADE IN TAIWAN

Taper	Point Type	CODE	inc GST
2MT	Standard	C050	<b>\$84.70</b>
3MT	Standard	C052	<b>\$96.80</b>
4MT	Standard	C054	<b>\$133.10</b>



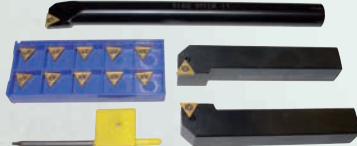
## TURNING TOOL KITS



**12mm**

Package Code	L450
Turning Tool (Right Hand)	L015
Turning Tool (Left Hand)	L016
Boring Bar (Right Hand)	L021
Inserts (Pack of 10) Suits all tools TCMT110204	L062

**inc GST \$290.40**



**16mm**

Package Code	L451
Turning Tool (Right Hand)	L017
Turning Tool (Left Hand)	L018
Boring Bar (Right Hand)	L022
Inserts (Pack of 10) Suit all tools TCMT110204	L062

**inc GST \$314.60**

## PARTING TOOL KITS

- 1 x Key insert remover
- 1 x Hex key



**12mm**

Package Code	L464
1 x 12mm Parting block	L027
1 x 26 x 2mm Parting blade	L468
2 x 2.2mm Parting inserts	L0512

**inc GST \$205.70**

Package Code	L465
1 x 16mm Parting block	L028
1 x 26 x 2mm Parting blade	L468
2 x 2.2mm Parting inserts	L0512

**inc GST \$205.70**

## THREADING TOOL KITS

**12mm**

Package Code	L456
Internal Threading Tool	L036
External Threading Tool	L031
1 x 55° 16ER Insert	L055
1 x 55° 16IR Insert	L057
1 x 60° 16ER Insert	L056
1 x 60° 16IR Insert	L058

**inc GST \$229.90**

**16mm**

Package Code	L457
Internal Threading Tool	L037
External Threading Tool	L032
1 x 55° 16ER Insert	L055
1 x 55° 16IR Insert	L057
1 x 60° 16ER Insert	L056
1 x 60° 16IR Insert	L058

**inc GST \$229.90**

## KNURLING TOOLS

- Diamond pattern



Shank size (LxWxH)	Knurl Size	Knurling Wheels	Knurl Type	CODE	inc GST
123.6 x 16 x 16mm	19 x 9.5 x 6.3mm	2	Medium	L079	<b>\$42.35</b>
76 x 9.5 x 16mm	19 x 9.5 x 6.3mm	2	Medium	L080	<b>\$83.60</b>
139 x 9.5 x 22mm	16 x 8 x 6.3mm	6	Fine-Medium-Coarse	L070	<b>\$95.70</b>

### Knurling Tool Kit

- 12mm centre height at one end & 16mm at the other end
- Interchangeable heads with Medium, Fine & Straight knurls



Centre Height	Head 1	Head 2	Head 3
12 or 16mm	Medium 2 Wheels	Fine 2 Wheels	Straight 1 Wheel

**\$107.80**  
inc gst  
L076