

NEW PRODUCTS 2015

METAL PANEL RESTORATION HAMMERS

ABR-10M Auto Body Repair Kit - Master

- Genuine hickory handles
- 3 x Hammers (Door Skin + Flat Dresser + Fender & Panel Dinging)
- 3 x Dollies (Angle + High Crown + Anvil)
- 4 x Spoons (Angle & Flat Short Double + Drip Moulding + Light Dinging + Short Single)



\$350.90
inc gst
H887

NBH-2 Nylon Bossing Mallets - Radius Ends

- High impact nylon with hickory wooden handle
- 1 x Professional mallet Ø75 to Ø16mm diameter ends
- 1 x Standard mallet Ø76 to Ø35mm diameter ends



\$99
inc gst
H890

NM-2 Nylon Mallets - Flat Ends

- High impact nylon with hickory wooden handle
- 1 x Ø65 x 150 long mallet with flat ends
- 1 x Ø55 x 135 long mallet with flat ends



\$99
inc gst
H893

METALMASTER

JOGGLER & PUNCH PLIER

JPP-1

- Dual head: crimp & punch tool
- 1mm sheet metal capacity
- 13mm x 22mm crimp (DxW)
- Ø5mm hole punch
- Spring return handle & tool head



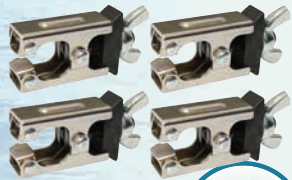
\$95.70
inc gst
S200



WELDING CLAMPS

MWC-4 Micro

- Pack of 4
- Adjustable thickness clamp 0-7mm
- Ideal for automotive applications & effective for positioning body panels prior to welding



\$29.70
inc gst
W112

ACW-3 3-Angles

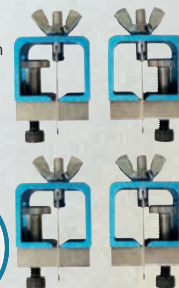
- Fix panels at 60°, 90° & 120° angle
- Secures panels with thickness up to 12.5mm



\$29.70
inc gst
W114

BWC-4 Butt

- Pack of 4
- Level adjusts between 0-3mm either side
- Holds panels edge to edge with almost no gap, allowing full penetration of the weld



\$42.35
inc gst
W113

PWC-4 Precision

- Precise alignment of work piece in 'L', 'T' or 'I' configuration
- Horizontal & vertical bubble levels



\$60.50
inc gst
W115

Flexible Body Files

- 355mm File Length

FBF-09T

- 9TPI Mill Cut

FBF-12T

- 12TPI Mill Cut



\$38.50
inc gst
F155/F156



FBH-14 Flexible Body File Holder

- 355mm Length
- Aluminium with flexible spring steel base plate
- Handle designed for both right and left hand use



\$49.50
inc gst
F150



Contour Gauges

- 126mm long (M966) • 254mm long (M967)
- 45mm depth of contour
- Metric & imperial scale • Magnetic side



\$18.15
inc gst
M966



\$26.40
inc gst
M967

90 Degree & Straight Edge/Seaming Pliers

- Plastic coated hand grips for comfort
- 57mm jaw width

EP-90 (S205)

- 90 Degree
- 55mm depth
- 260mm overall length

EP-180 (S203)

- 180 Degree
- 60mm depth
- 275mm overall length



\$54.45
inc gst
S205/S203



PPS-7 Hole Punch Set

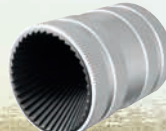
- 1.2mm Thickness capacity
- Steel body hole punch plier
- 3/32", 1/8", 5/32", 3/16", 7/32", 1/4" & 9/32" punches & dies
- Includes plastic storage case



\$60.50
inc gst
P112

PT054 - Pipe/Tube Deburring Tool

- Ø10 - Ø54mm capacity
- Double ended internal/external
- Aluminium knurled body
- Used for deburring Pipe/Tube Edge



\$72.60
inc gst
D068

MKP-2 Mobile Knee Pads

- 6 x oil resistant swivel wheels
- Durable high impact plastic frame
- Built-in tool storage tray
- 113kg load capacity



\$38.50
inc gst
A3615

WORKSHOP EQUIPMENT

- Pick Up Tool with Magnetic Head & 1x LED Light**
- 620mm long • Flexible shaft
 - Ø14.8mm magnetic head
 - Claw can grip up to 30mm round objects

\$16.50
inc gst
M0010



- VS-1000 Portable Video Inspection Camera**
- 72 x 54mm (WxH) colour screen
 - 1 metre flexible cable
 - IP67 camera head & LED lighting
 - Includes: Magnetic pick up tool, 45 degree Mirror tool, 4 x AA batteries



\$181.50
inc gst
M697



Extra Cable Extensions

SIZE	CODE	inc GST
2 Meter	M6972	\$42.35
3 Meter	M6973	\$60.50

BORING BAR SET - HSS

- 8mm Boring Bars
- 1 x Boring bar - small,
- 1 x Boring bar - medium,
- 1 x Boring bar - large
- 1 x 60° Internal threading bar
- 1 x 55° Internal threading bar
- 1 x Clamp block holder

\$60.50
inc gst
L006A



SHEET METAL & FABRICATION

- HS-2S Throatless Hand Lever Shears**
- 1.2mm mild steel capacity
 - Cast steel construction
 - Tool steel quality blades
 - Gear drive shearing action

\$275
inc gst
S184

DEMO VIDEO
ONLINE



- SRG-24H Manual Sheet Metal Curving Rolls Bench Mount**
- 610 x 1mm mild steel capacity
 - 60mm rolling diameter
 - 40mm roll diameter
 - Swivel top roller

\$462
inc gst
S269



- PR-132H Motorised Sheet Metal Curving Rolls**
- 1300 x 1.6mm capacity
 - Initial pinch rolls
 - Swing out end for cylinder removal
 - 0.75kW / 1hp, 415V motor

\$2,959
inc gst
S763



- AR-HD2 Air Hose Reel**
- 15 metre x Ø10mm
 - 400psi PVC hose
 - 4-Way roller guide
 - Stop anywhere hose lock

RETRACTABLE

\$176
inc gst
H038



- HFLP-35 Portable Magnetic Drilling Unit**
- Ø35mm drill capacity • Manual feed
 - Low profile & compact with heavy duty magnet
 - 1100W, 240V motor
 - Includes blow mould plastic case, chip guard & safety strap

\$957
inc gst
D9506



PROFESSIONAL ENGRAVER

- Model 480**
- 20,32m/2s vibration value
 - 100 strokes per minute
 - Adjustable penetration depth
 - Dimensions: 240 x 50 x 76mm (L x W x H)

RECORD POWER
ESTABLISHED 1909



\$119.90
inc gst
R990

Optional Tips

Type	Pack	CODE	inc GST
A2 Fine Carbide Point	1	R9902	\$19.80
A4 Carbide Engraving Point	2	R9903	\$19.80
A5 Standard Engraving Points	5	R9904	\$16.50
A6 & A7 Ball Points	2	R9905	\$22.00
A8 Abrasive Engraving Point	1	R9906	\$16.50
Engraver Carving Set	5	R9907	\$16.50



FLOWDRILL COLLET CHUCK SET

- FD-32**
- ER32 x 2MT collet chuck adaptor
 - ER32 x Ø4-Ø3, Ø6-Ø5, Ø8-Ø7 & Ø10-Ø9mm collets
 - Includes 3MT sleeve, collet spanner, chuck spanner & aluminium deluxe case

\$275
inc gst
T880



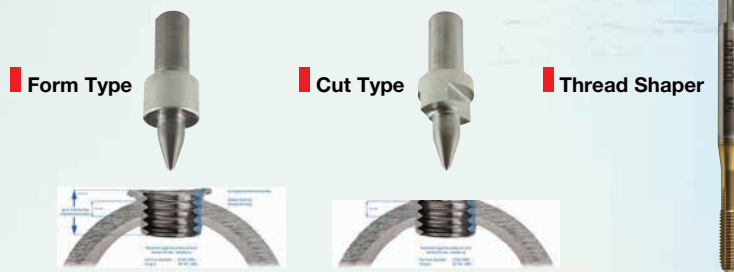
THERMADRILL®
The bushing that really works!

1. Step Thermal-drilling
2. Step Thread forming
3. Result Stable bushing

ONTOOL
Innovative Tools

made in Germany

See Video Demonstration Online



MODEL ORDER CODE	FD-F5 T882	FD-C5 T883	FD-F6 T884	FD-C6 T885	FD-F8 T886	FD-C8 T887	FD-5T T890	FD-6T T891	FD-8T T892
TYPE	Thermadrill Form	Thermadrill Cut	Thermadrill Form	Thermadrill Cut	Thermadrill Form	Thermadrill Cut	Thermadrill Thread Sharper	Thermadrill Thread Sharper	Thermadrill Thread Sharper
SIZE	Suits M5	Suits M5	Suits M6	Suits M6	Suits M8	Suits M8	M5	M6	M8
Material Thickness Max	mm	2mm	3mm	2mm	3mm	2.5mm	4mm	~	~
Recommended rpm - Mild Steel	rpm	2,200 - 2,500	2,200 - 2,500	2,000 - 2,400	2,000 - 2,400	1,600 - 2,200	1,600 - 2,200	800	650
Recommended rpm - Stainless Steel	rpm	1,980 - 2,250	1,980 - 2,250	1,800 - 2,160	1,800 - 2,160	1,440 - 1,980	1,440 - 1,980	720	585
Recommended rpm - Aluminium	rpm	3,700	3,700	3,600	3,600	3,200	3,200	800	650
INC PRICE	\$154	\$231	\$165	\$264	\$198	\$308	\$82.50	\$88	\$93.50

SWIVEL HEAD METAL CUTTING BAND SAW

BS-5V

- 130 x 125mm (W x H) rectangular capacity
- Electronic variable blade speed 30-80mpm
- Swivel head to 60° using calibrated vice
- 1kW / 1.3hp, 240V motor

\$594
inc gst
B004

Blades to suit BS-5V

Type	TPI	Material	Code	Inc GST
Carbon	6	Solid Steel	B197	\$12.10
Carbon	14	Medium Steel	B198	\$12.10
Carbon	18	Thin Wall Steel	B199	\$12.10
Bi-metal	8-12	Medium Steel	B196	\$29.70



FORKLIFT JIB ATTACHMENT

FLA-2T

- 2000kg lift capacity
- Swivel hook with latch
- 465mm fork tyne centres
- 1200mm safety chain

Please note forklift capacity must be rated W.L.L 2 Tonne (2000kg) or greater

Shown mounted on forklift (forklift not supplied)

\$352
inc gst
C195



3 AXIS DIGITAL READOUT

DR03 3-Axis Optimum Digital Readout Counter

- The DR03 digital readout counter is designed to suit mill and lathe machines
- Bright 8 digit LED display for X, Y & Z Axis
- 0° to 40°C operating temperature
- Counter can be set to read in 1µm, 5µm or 10µm
- Each Axis requires a DR03-RH reader head and a DR03-MS magnetic scale

\$242
inc gst
D690



OPTIMUM



Note: DR03-MS magnetic scale can be cut to desired length to suit your requirements

DR03-MS Optimum Magnetic DRO Scale

- Stainless steel strip
- Magnetic rubber strip
- 1500mm Travel
- 5µm scale accuracy
- 10 x 1.5mm (W x H)

\$55
inc gst
D694

DR03-RH Optimum Magnetic DRO Reader Head

- 1500mm cable
- 5µm scale accuracy
- 32 x 23mm (W x H)

\$209
inc gst
D692

OPTIMUM



CYCLONE DUST SEPARATOR

CDS-2/3

- 99% high efficiency
- 110 litre steel drum with plastic bag
- Ø152mm inlet with 2 x Ø100mm reducer
- Ø152 - 25mm stepped outlet reducer
- Suits up to 3hp dust collectors

\$385
inc gst
W316



MILL DRILL - GEARED & TILTING HEAD

HM-47

- 2 Axis DRO system
- Dovetail column
- Geared head drive
- Head tilts ±90°
- 2hp 240V motor
- Travels: (X) 540mm (Y) 185mm (Z) 410mm

\$4,015
inc gst
M125D



MOTORISED SWAGE & JENNY MACHINE

SJM-1.2B

- Heavy duty cast iron head
- Adjustable throat depth guide
- Reduction motor with brake
- Roving foot pedal control with emergency stop
- Steel stand with storage shelf
- Mild steel capacity is rated on hot rolled material with 250MPa

Includes 8 sets of rolls:

- Wiring
- Crimping
- Beading
- Necking
- Cutting
- Panning
- Flanging
- Swagging

1.2mm MILD STEEL CAPACITY

Model CODE		SJM-1.2B S639A
Mild Steel Capacity	mm	1.2
Throat Depth Maximum	mm	240
Roll Diameter	mm	62
Output Drive	rpm	32
Motor Power	kW/hp	0.75kW/1hp
Voltage	V	240
Shipping Dim. (LxWxH)	cm	111 x 48 x 150
Weight	kg	135

\$2,409
inc gst
S639A



HYDRAULIC & MECHANICAL GUILLOTINES

SG-815H Hydraulic Guillotine

- 2470mm x 1.6mm capacity
- 880mm work table height
- Adjustable backgauge
- Safety photo electric rear guarding with 3 beams
- 2.2kW / 3hp 240V motor

METALMASTER

\$7,645
inc gst
S537



MG-840 Mechanical Guillotine

- 2500mm x 4mm capacity
- Quick action blade clearance adjustment for shearing material 1 - 4mm
- Blades made from 9CrSi material
- 7.5kW / 10hp 415V brake motor

\$14,245
inc gst
S926A



VARIABLE SPEED BENCH LATHES

TU-1503V Mini

- 150 x 300mm turning capacity
- 11mm bore, 80mm 3 jaw chuck
- Electronic variable speed
- 0.45kW, 0.6hp 240V motor

\$792
inc gst
L685



TU-2004V

- 200 x 300mm turning capacity
- 21mm bore, 100mm 3 jaw chuck
- Electronic variable speed
- 0.6kW, 0.8hp 240V motor

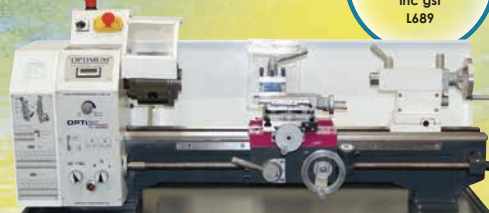
\$1,309
inc gst
L687



TU-2506V

- 250 x 550mm turning capacity
- 26mm bore, 125mm 3 jaw chuck
- Electronic variable speed
- 1.2kW, 1.6hp 240V motor

\$2,035
inc gst
L689



OPTIMUM®

LATHE & MILL DRILL COMBINATION PACKAGE

TU-2506V-16M

Lathe & Mill Drill Combination Package

TU-2506V Bench Lathe:

- 250 x 550mm capacity
- 26mm spindle bore
- Variable speeds 150-2500rpm
- 1.6hp 240V motor

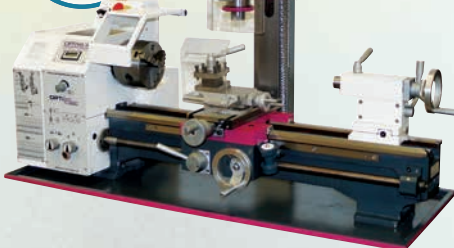
BF-16AV Mill Head:

- 2-speed gearbox
- Head tilts ±90°
- Variable speeds 100-3000rpm
- 0.66hp, 240V motor

BF-16AV MILL HEAD

\$715
inc gst
M646

**3MT
SPINDLE**



TU-2506V-16M COMBINATION

\$2,750
inc gst
K146

TU-2506V-20M

Lathe & Mill Drill Combination Package

TU-2506V Bench Lathe:

- 250 x 550mm capacity
- 26mm spindle bore
- Variable speeds 150-2500rpm
- 1.6hp 240V motor

BF-20AV Mill Head:

- 2-speed gearbox
- Head tilts ±90°
- Variable speeds 90-3000rpm
- 1.13hp, 240V motor

BF-20AV MILL HEAD

\$869
inc gst
M647

**3MT
SPINDLE**



TU-2506V-20M COMBINATION

\$2,904
inc gst
K147

4 JAW INDEPENDENT LATHE CHUCK



Type	Diameter Ø	Suits-OPTI Turn Lathe	Code	inc GST
4 Jaw Chuck	100	TU-2004V	L6875	\$165
4 Jaw Chuck	125	TU-2506V	L6895	\$165
Back plate	125	TU-2506V	L6893	\$49.50

LATHE STANDS

ST-2004V

- Suits TU-2004V
- Steel lathe stand
- 2 x wide compartment drawers

ST-2506V

- Suits TU-2506V
- Steel lathe stand
- 3 x left side compartment drawers
- 1 x right side cabinet door

**MANUFACTURED
FROM STEEL**



\$319
inc gst
L688



\$319
inc gst
L690

VARIABLE SPEED & TILTING HEAD MILL DRILLS

BF-16V Mini Mill Drill - Geared & Tilting Head

- Electronic infinitely variable speed
- Dovetail column
- Head tilts ±90°
- 500W 240V motor
- Travels:
(X) 220mm
(Y) 160mm
(Z) 210mm

\$1,199
inc gst
M649



**CAST IRON
WORK TABLE**

BF-20LV Mill Drill - Geared & Tilting Head

- Electronic infinitely variable speed
- Dovetail column
- 2 speed gearbox
- Head tilts ±90°
- 850W 240V motor
- Travels:
(X) 480mm
(Y) 175mm
(Z) 280mm

\$1,859
inc gst
M650



**DOVETAIL
VERTICAL Z-AXIS**

MH-28V Mill Drill - Geared & Tilting Head

- Electronic infinitely variable speed
- Dovetail column
- 2 speed gearbox
- Head tilts ±90°
- 1.1kW 240V motor
- Travels:
(X) 430mm
(Y) 220mm
(Z) 355mm

\$2,585
inc gst
M652



**CAST IRON TABLE
WITH T-SLOTS**

MILL DRILL STANDS

- Front door for storing parts
- Includes coolant & swarf collection tray
- 750 x 500 x 940mm (L x W H)

ST-1620V Mill Drill Stand

- Suits BF-16V & BF-20LV Milling Machines

ST-28V Mill Drill Stand

- Suits MH-28V Milling Machines



\$319
inc gst
M651/M653

M651

M653